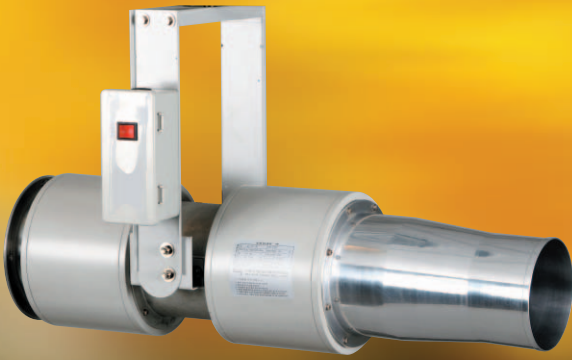


Pro-Jet Fan 40S Series

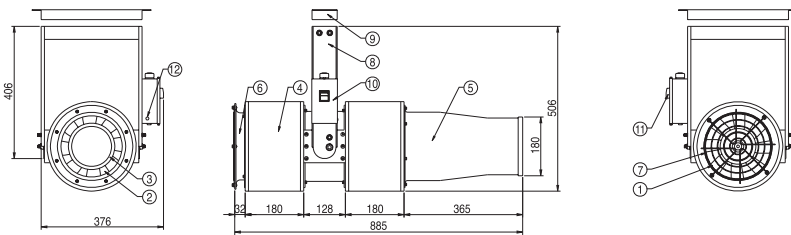


PFS-40S, PFH-40S, PFV-40S

Features

- High Static Pressure by Combining Precise Impeller with Stator
- Long Throw by a Small Diffusion Angle
- 28 Times Induction Ratio in comparison with Discharge Flow Rate

Dimensions



Front

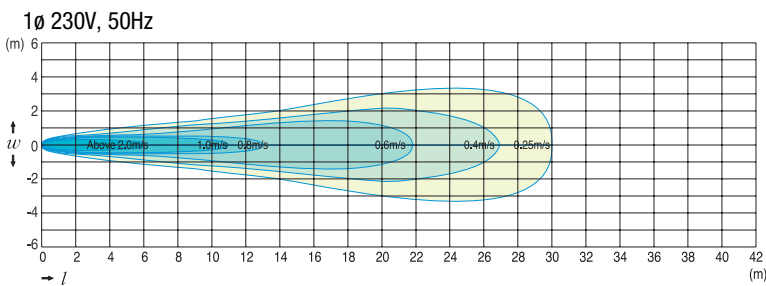
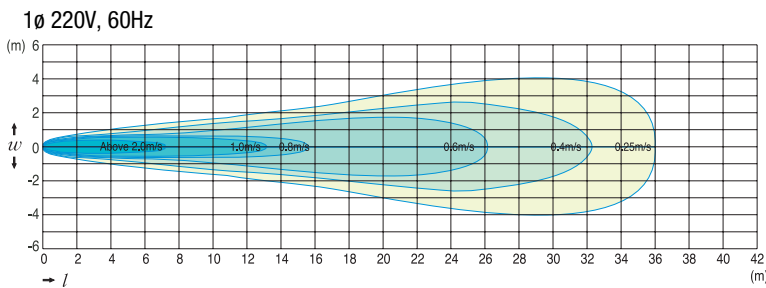
Side

Back

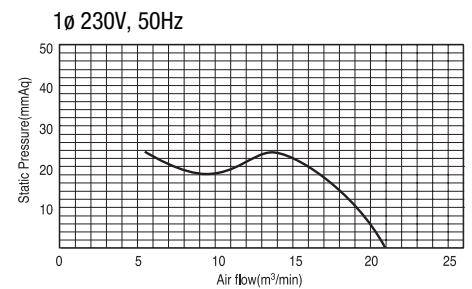
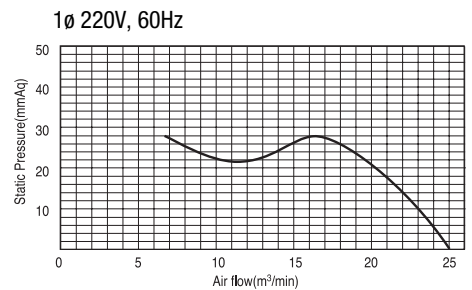
Material Table

- | | |
|--------------|---------------------|
| ① Impeller | ⑦ Screen |
| ② Fan Case | ⑧ Side Bracket |
| ③ Motor | ⑨ Anchor Bracket |
| ④ Silencer | ⑩ Terminal Box |
| ⑤ Nozzle | ⑪ Circuit Protector |
| ⑥ Bell Mouth | ⑫ Operation Lamp |

Air Distributions



Performance Curves



Specifications

Model Name		PFS-40S (Constant Air Flow)		PFH-40S (High Temperature, 250°C, 2hrs)		PFV-40S (Variable Air Flow)	
		1 ϕ 220V, 60Hz	1 ϕ 230V, 50Hz	1 ϕ 220V, 60Hz	1 ϕ 230V, 50Hz	1 ϕ 220V, 60Hz	1 ϕ 230V, 50Hz
Rated Power	V, Hz	1 ϕ 220V, 60Hz	1 ϕ 230V, 50Hz	1 ϕ 220V, 60Hz	1 ϕ 230V, 50Hz	1 ϕ 220V, 60Hz	1 ϕ 230V, 50Hz
Air Flow Rate	CMM	25.0	21.0	25.0	21.0	14.7~36.0	
Outlet Velocity	m/s	17.3	14.6	17.3	14.6	10.1~25.0	
Maximum Throw	m	36	30	36	30	42	
Power Consumption	W	210	190	210	190	420	
Fan Output	W	150	120	150	120	320	
Sound Level	dB(A)	62.2	60.8	62.2	60.8	66.5	
Rotation Speed	rpm	3,400	2,850	3,400	2,850	2,000~4,900	
Weight	kg	16.3	16.3	16.3	16.3	17.0	