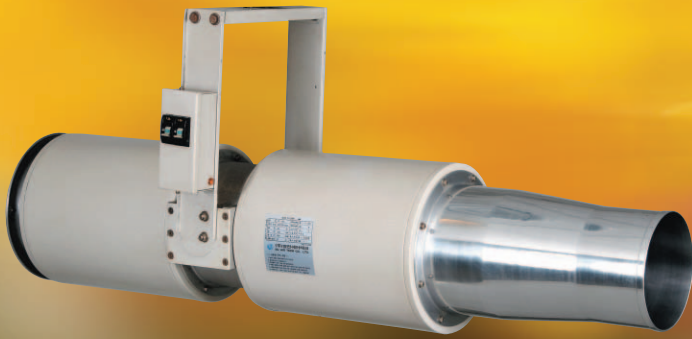


Pro-Jet Fan 40L Series

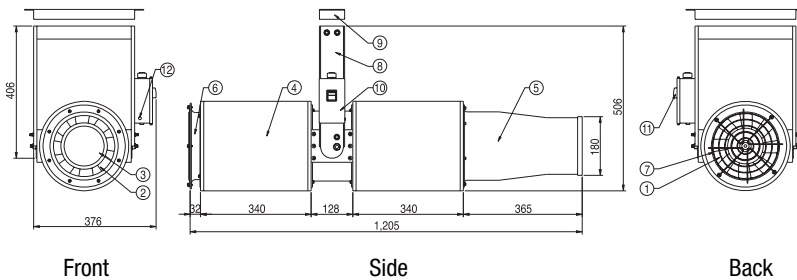


PFS-40L, PFH-40L, PFV-40L

Features

- Lower Noise by Applying Long Silencer than 40S Series
- Lower Power Consumption than the Same Capacity's Products
- Easy Installation and Adjustment of Installation Angle

Dimensions

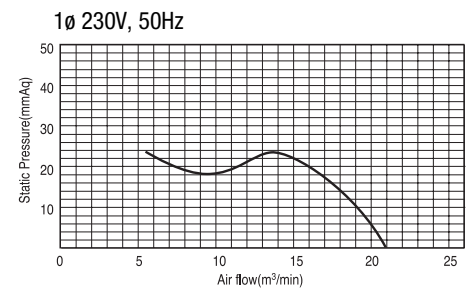
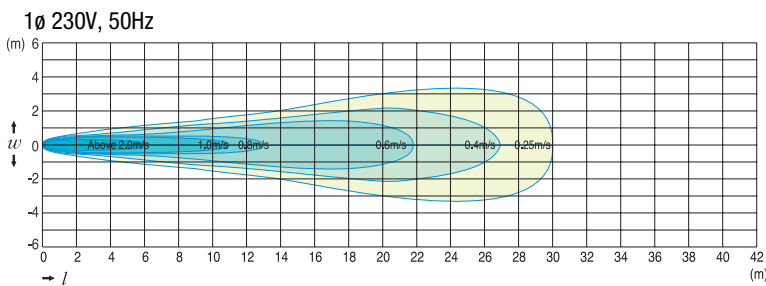
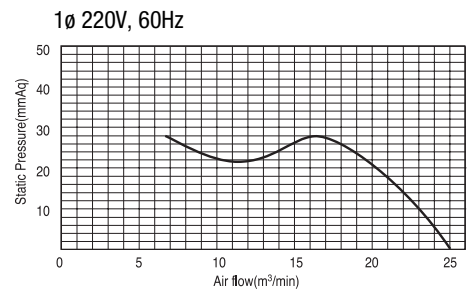
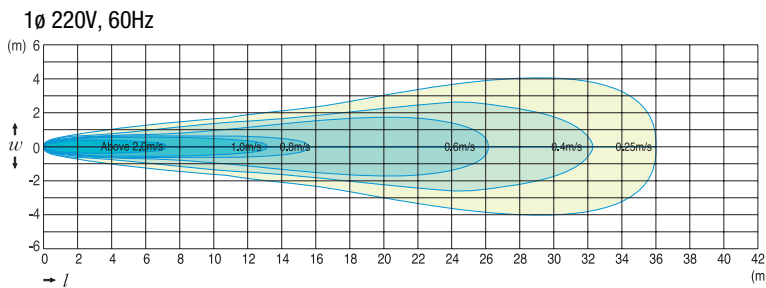


Material Table

- | | |
|--------------|---------------------|
| ① Impeller | ⑦ Screen |
| ② Fan Case | ⑧ Side Bracket |
| ③ Motor | ⑨ Anchor Bracket |
| ④ Silencer | ⑩ Terminal Box |
| ⑤ Nozzle | ⑪ Circuit Protector |
| ⑥ Bell Mouth | ⑫ Operation Lamp |

Air Distributions

Performance Curves



Specifications

Model Name	V, Hz	PFS-40L (Constant Air Flow)		PFH-40L (High Temperature, 250°C, 2hrs)		PFV-40L (Variable Air Flow)	
		1 \emptyset 220V, 60Hz	1 \emptyset 230V, 50Hz	1 \emptyset 220V, 60Hz	1 \emptyset 230V, 50Hz	1 \emptyset 220V, 60Hz	1 \emptyset 230V, 50Hz
Rated Power	V, Hz	1 \emptyset 220V, 60Hz	1 \emptyset 230V, 50Hz	1 \emptyset 220V, 60Hz	1 \emptyset 230V, 50Hz	1 \emptyset 220V, 60Hz	1 \emptyset 230V, 50Hz
Air Flow Rate	CMM	25.0	21.0	25.0	21.0	14.7~36.0	
Outlet Velocity	m/s	17.3	14.6	17.3	14.6	10.1~25.0	
Maximum Throw	m	36	30	36	30	42	
Power Consumption	W	210	190	210	190	420	
Fan Output	W	150	120	150	120	320	
Sound Level	dB(A)	61.2	60.0	61.2	60.0	64.3	
Rotation Speed	rpm	3,400	2,850	3,400	2,850	2,000~4,900	
Weight	kg	19.5	19.5	19.5	19.5	20.2	