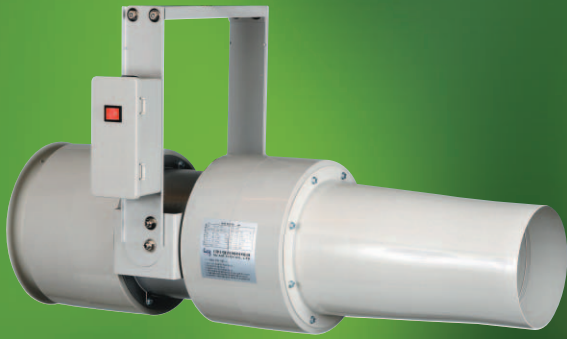


Pro-Jet Fan 40E Series

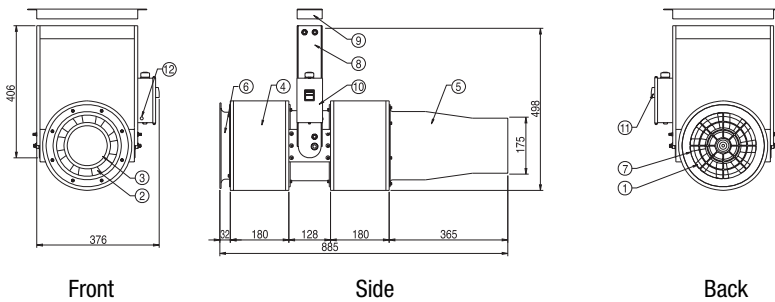


PFS-40E, PFV-40E

Features

- Easy Installation and Adjustment of Installation Angle
- Anti-Corrosion Plastic Adoption in All Outer Parts
- Light Weight by Adoption of Plastic Materials

Dimensions



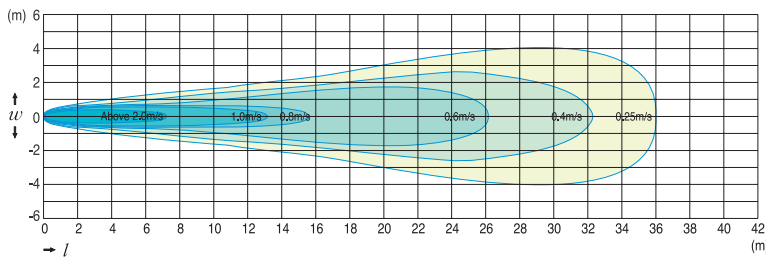
Material Table

- | | |
|-------------------|---------------------|
| ① Impeller | ⑦ Screen |
| ② Fan Case | ⑧ Side Bracket |
| ③ Motor | ⑨ Anchor Bracket |
| ④ Silencer & Case | ⑩ Terminal Box |
| ⑤ Nozzle | ⑪ Circuit Protector |
| ⑥ Bell Mouth | ⑫ Operation Lamp |

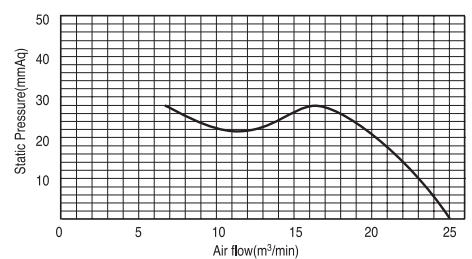
Air Distributions

Performance Curves

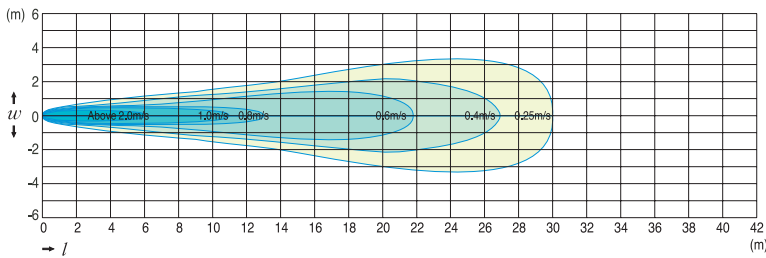
1 ϕ 220V, 60Hz



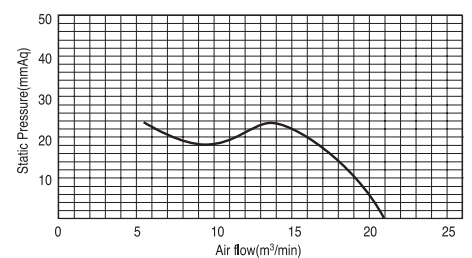
1 ϕ 220V, 60Hz



1 ϕ 230V, 50Hz



1 ϕ 230V, 50Hz



Specifications

Model Name	PFS-40E (Constant Air Flow)		PFV-40E (Variable Air Flow)		PFH-40E (High Temperature, 250°C, 2hrs)	
	V, Hz	1 ϕ 220V, 60Hz	1 ϕ 230V, 50Hz	1 ϕ 220V, 60Hz		1 ϕ 230V, 50Hz
Rated Power	V, Hz	1 ϕ 220V, 60Hz	1 ϕ 230V, 50Hz	1 ϕ 220V, 60Hz	1 ϕ 230V, 50Hz	Not Available
Air Flow Rate	CMM	25.0	21.0	14.7~36.0		
Outlet Velocity	m/s	17.3	14.6	10.1~25.0		
Maximum Throw	m	36	30	42		
Power Consumption	W	210	190	420		
Fan Output	W	150	120	320		
Sound Level	dB(A)	64.0	62.3	65.1		
Rotation Speed	rpm	3,400	2,850	2,000~4,900		
Weight	kg	13.9	13.9	14.6		